

GENERAL VALVES

ICV - A MEMBER OF THE **AVR** GROUP



Total control inside buildings

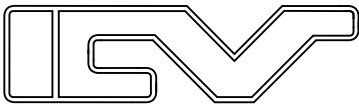
About ICV



Total Solution for Building Fluid System



The AVK Group is a privately owned industrial group that currently comprises 69 companies. AVK's core business is the production of valves, hydrants and accessories for the water and gas distribution network, sewage treatment and fire protection. Furthermore, AVK has built up strong brands supplying valves and controls for water treatment, dams & reservoirs, HVAC, chemical processing, marine and other industrial sectors. AVK products are designed to the major international standards and are sold in more than 85 countries worldwide. When dealing with the AVK Group expect quality, reliability, functionality and long lifetime in service.



ICV is a wholly-owned subsidiary of AVK Valves, a company that has been designing, manufacturing and supplying the world's water, sewage and gas markets for over 50 years. AVK is a synonym for quality, and ICV continues that tradition in Asia. ICV's general valve products are made by either one of AVK's factories or one of ICV's supply partners, who are constantly monitored by ICV for product quality and service.

ICV is specialised in the supply of valve and other products, characterised by superior quality and outstanding durability for HVAC and building services markets. All ICV products are tested in modern production facilities before being branded, approved to join the ICV range, guaranteed and offered to customers.

This attention to quality puts ICV in a different league to others in the market who often are offering a diverse range of brands with loose guarantees.

From Durban to Dubai, Sheffield to Shanghai and Alaska to Adelaide, AVK has been providing users with quality, reliability, peace of mind and efficiency in every type of project including pumping stations, treatment plants, distribution networks and building construction. Now, ICV has brought the same quality and reliability to the Asian Construction Industry, focusing on Building Services and HVAC.

ICV has a mission - to become the best friend of the developer, the HVAC engineer and contractor in Asia, through the supply of a carefully crafted set of HVAC and building services products that are guaranteed to perform as specified.

ICV's General Valve range complements ICV's Automatic Balancing and Control products and provides a total package more comprehensive than previously seen in the industry.

At ICV we define "the customer" as anyone who benefits from the specification, purchase or use of our products. Developers, consultants, designers, contractors, owners and tenants - they are all within our consideration. For ICV, it is really, "all about you!"

Certificates



DS/EN ISO 9001



DS/EN ISO 14001



DS/OHSAS ISO 18001



CE certificate for 951 actuator



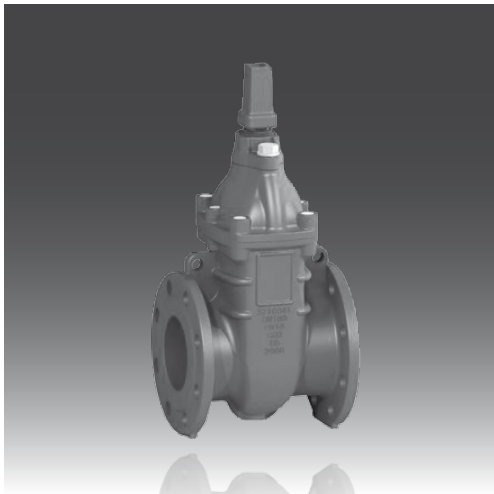
02 DN50 - 400

Resilient seated non rising stem gate valve
 Flange PN16
 Medium temp.: <70°C
 Body: Ductile iron GGG50
 Stem: Stainless steel AISI420
 Disc: Ductile iron with EPDM coating



21 DN50 - 400

Resilient seated rising stem gate valve
 Flange PN16
 Medium temp.: <70°C
 Body: Ductile iron GGG50
 Stem: Stainless steel AISI420
 Disc: Ductile iron with EPDM coating



37 DN50 - 300

Metal seated gate valve (non-rising)
 Flange PN16/25
 Medium temp.: <70°C
 Body: Ductile iron GGG50
 Stem: Stainless steel AISI420
 Disc: Ductile iron
 Trim: Aluminium Bronze



901 DN50 - 400

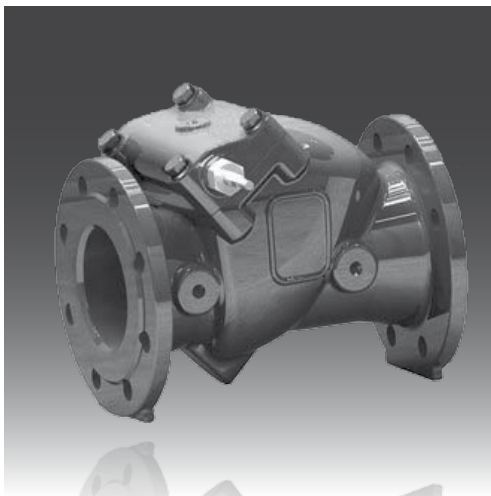
Metal seated gate valve (rising/non-rising)
 Flange PN16/25
 Medium temp.: <70°C
 Body: Ductile iron GGG50
 Stem: Stainless steel AISI420
 Disc: Ductile iron
 Trim: Aluminium Bronze



902-2 DN50 - 400

Globe valve

Flange PN16/25
Medium temp.: <120°C
Body: Cast iron GG20
Stem: Stainless steel AISI420
Disc: Cast iron
Trim: Aluminium Bronze



41 DN50 - 600

Swing check valve

Flange PN16
Medium temp.: <70°C
Body: Ductile iron GGG50
Stem: Stainless steel
Disc: Carbon steel with EPDM coating



903-1 DN50 - 600

Globe silent check valve

Flange PN16/25
Medium temp.: <120°C
Body: Cast iron GG20
Stem: Aluminium Bronze/Stainless steel
Disc: Aluminium Bronze/Stainless steel
Trim: Aluminium Bronze/Stainless steel



903-2 DN50 - 300

Wafer silent check valve
 Flange PN16
 Medium temp.: <120°C
 Body: Cast iron GG20
 Stem: Aluminium Bronze/Stainless steel
 Disc: Aluminium Bronze/Stainless steel
 Trim: Aluminium Bronze/Stainless steel



903-3 DN50 - 450

Energy saving check valve
 Flange PN16/25
 Medium temp.: <70°C
 Body: Ductile iron GGG50
 Stem: Stainless steel
 Disc: Ductile iron with EPDM coating



904-1 DN50 - 600

Wafer double door check valve
 Flange PN16
 Medium temp.: <90°C
 Body: Cast iron GG20
 Stem: Stainless steel
 Disc: Stainless steel
 O-ring: EPDM



906-2 DN15 - 50

Bronze gate valve
Thread
Medium temp.: <120°C
Body/Disc: Bronze EN CC491K
Stem: DZR Brass EN CW602N
Packing: PTFE



906-4 DN15 - 50

Bronze globe valve
Thread
Medium temp.: <120°C
Body: Bronze EN CC491K
Stem: DZR Brass EN CW602N
Packing: PTFE



906-6 DN15 - 50

Bronze check valve
Thread
Medium temp.: <120°C
Body/Disc: Bronze EN CC491K



906-8 DN15 - 50

Bronze ball valve
Thread
Medium temp.: <100°C
Body: Bronze EN CC491K
Stem: DZR Brass EN CW602N
Ball: Chrome plated brass
Packing: PTFE



907-1 DN15 - 50

Stainless steel gate valve
 Thread
 Medium temp.: <120°C
 Body/Disc: Stainless steel AISI304/316
 Disc: Stainless steel AISI304/316
 Packing: PTFE



907-2 DN15 - 50

Stainless steel globe valve
 Thread
 Medium temp.: <120°C
 Body/Disc: Stainless steel AISI304/316
 Stem: Stainless steel AISI304/316
 Packing: PTFE



907-3 DN15 - 50

Stainless steel check valve
 Thread
 Medium temp.: <120°C
 Body/Disc: Stainless steel AISI304/316



907-4 DN15 - 50

Stainless steel ball valve
 Thread
 Medium temp.: <100°C
 Body: Stainless steel AISI304/316
 Stem: Stainless steel AISI304/316
 Ball: Stainless steel AISI304/316
 Packing: PTFE



910-2 DN50 - 600

Y strainer

Flange
 Medium temp.: <90°C
 Body: Ductile iron GGG40
 Filter: Stainless steel AISI304/316



910-7 DN15 - 50

Bronze Y strainer

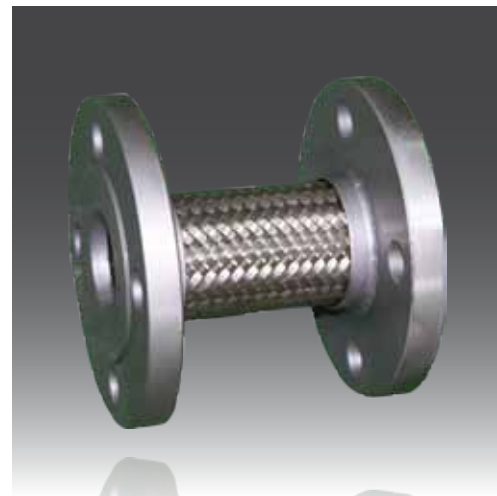
Thread
 Medium temp.: <120°C
 Body: Bronze EN CC491K
 Filter: Stainless steel AISI304
 Gasket: PTFE



911 DN15 - 600

Expansion joint (Single/Double sphere)

PN16
 Medium temp.: <100°C
 Rubber: EPDM/NBR
 Flange/Thread: Carbon steel



911 DN15 - 1000

Stainless steel flexible joint

PN16/25
 Medium temp.: <100°C
 Hose: Stainless steel AISI304/316
 Braid: Stianless steel AISI304/316
 Flange/Thread: Carbon steel



851 DN50 - 200

Automatic air vent

Flange PN16
 Medium temp.: <70°C
 Body: Ductile iron GGG40



912 DN15 - 25

Brass auto air vent

Thread PN16
 Medium temp.: <70°C
 Body: Brass EN CW617N



924-1 DN65 - 400

Piston type water hammer arrester

Flange PN16/25
 Medium temp.: <100°C
 Body: Stainless steel
 Piston: Stainless steel/Brass



924-2 DN15 - 50

Chamber water hammer arrester

Thread PN16
 Medium temp.: <100°C
 Body: Stainless steel
 Seat: PTFE



76 DN50 - 300

Wafer butterfly valve

Wafer PN10/16
 Medium temp.: <70°C
 Body: Cast iron GG25
 Stem: Stainless steel AISI420
 Seat: EPDM
 Disc: Nickel plated carbon steel
 Stainless steel



813 DN50 - 600

Double flange butterfly valve

Flange PN16
 Medium temp.: <70°C
 Body: Ductile iron GGG40
 Stem: Stainless steel AISI420
 Seat: EPDM
 Disc: Nickel plated carbon steel
 Stainless steel



925-1 DN50 - 600

Lug butterfly valve

Wafer PN16/25
 Medium temp.: <70°C
 Body: Cast iron GG25
 Stem: Stainless steel AISI420
 Seat: EPDM
 Disc: Cast iron with epoxy coating
 Stainless steel
 Option: 925-5/6 electric actuator



925-2 DN50 - 600

Wafer butterfly valve

Wafer PN16
 Medium temp.: <70°C
 Body: Cast iron GG25
 Stem: Stainless steel AISI420
 Seat: EPDM
 Diac: Cast iron with epoxy coating
 Stainless steel
 Option: 925-5/6 electric actuator



920-1 DN15 - 25

Electric control valve

Thread PN16
 Medium temp.: <95°C
 Body: Brass
 Stem: Stainless steel
 Sealings: NBR



920-2 DN15 - 150

Electric ball valve

PN16
 Medium temp.: <95°C
 Body: Brass/Ductile iron
 Ball: Chrome plated brass
 Seat: PTFE



920-3 DN32 - 50

Electric control valve

Thread PN16
 Working temp.: <50°C
 Medium temp.: <95°C
 Body: DZR Brass CW 602N
 Stem: Stainless steel
 Disc: Brass



920-4 DN65 - 200

Electric control valve

Flange PN16
 Working temp.: <50°C
 Medium temp.: <95°C
 Body: Cast iron GG25
 Stem: Stainless steel
 Disc: Brass

Shenzhen Kerry City P2

Usage: Hotel/apartment/office

Product: General valves for HVAC system



Wuchang Jiyuqiao Westin Hotel

Usage: Hotel/apartment/office

Site area: 620k m²

Product: General valves for HVAC system and fire protection system

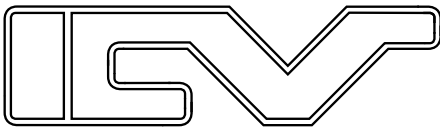


Shenyang Zhonghui Plaza

Usage: Hotel/apartment/office

Product: Manual valves etc





ICV - A Member of the AVK Group

Project References



Kunshan/Wuhu Shimao Plaza

Uasge: Hotel/shopping mall

Product: General valves, control valves for HVAC system



Taiwan Semiconductor Shanghai Songjiang

Uasge: Plant/office

Site area: 2300 mou

Product: General valves and balancing valves



Shanghai Pudong Kerry City

Uasge: Hotel/apartment/office

Site area: 634k ft²

Product: General valves for HVAC system and fire protection system

China New Expo Centre

Uasge: Exhibition centre

Site area: 155.5 acre

Product: Flowmaster, DP controller etc



West Tianjin Train Station

Uasge: Public facilities

Product: Flowmaster etc



Wuhan Shopping Mall (P1 & P2)

Uasge: Office/shopping mall

Product: General valves, control valves and balancing valves



More References

Beijing Longhu Mansion
State Assets Committee Beijing
Beijing Jiaming Centre P2
Tianjin Huading Mansion
Tianjin Lifu Plaza
Tianjin Dayuecheng Plaza
Meihekou Heat & Electric Power Company
Dalian Software Park
Xi'an Westin Hotel
Luxembourg Pavilion Shanghai Expo
Shanghai Pudong Airport
Shanghai Dongruan R & D Centre
Shanghai Youheshi Mansion
Nanjing Gaojing Gear Factory
Wuxi Metro Project
Wuhu Tobacco Company
Jiuhua Buddhist Culture Park
Guangzhou Aisa Game Centre
Chongqing Westin Hotel
Guizhou 201 Mansion
Wuhan Biological City P1
Wuhan Ruian Project
Shiyan Shopping Mall

Beijing B7 Industry Park
Beijing Donghuan Plaza
Beijing Hepingmen Mansion
Tianjin Olympic Water Park
Tianjin Nankai Hospital
Manzhouli Shangri-la Hotel
Shenyang Environmental Park
Xianyang TV Centre
Shanghai Guohao Changfeng Hotel
Shanghai Fashion Centre
Shanghai Jianyin Mansion
AstraZeneca Shanghai P1 & P2
Shanghai Jing'an Traffic Centre
Laboratory Building NJUST
Hangzhou Sanofi-aventis
Lu'an Hospital of Chinese Medicine
Xiamen Government Affairs Centre
Guangzhou Dongruan R & D Centre
Guizhou Procuratorate Apartment
Henan General Office of Finance
Wuhan Zhongnan Garden Hotel
Wuhan Aige Project
Wuhan 709 R & D Institute

Please contact us for more info.



Contact

China: IC Valves (Nanjing) Co., Ltd.
Address: Rm 16G, Block A Changfa Centre
Tel: 025-8320 0010/8320 0020
Fax: 025-8320 5225
Website: WWW.ICVALVES.COM
WWW.AVKVALVES.COM
Email: INFO@ICVALVES.CN

818140CS/2012-1-30

Copyright©IC Valves (Nanjing) Co., Ltd. 2012

The designs, materials and specifications shown are subject to change without notice due to our continuing programme of product development.